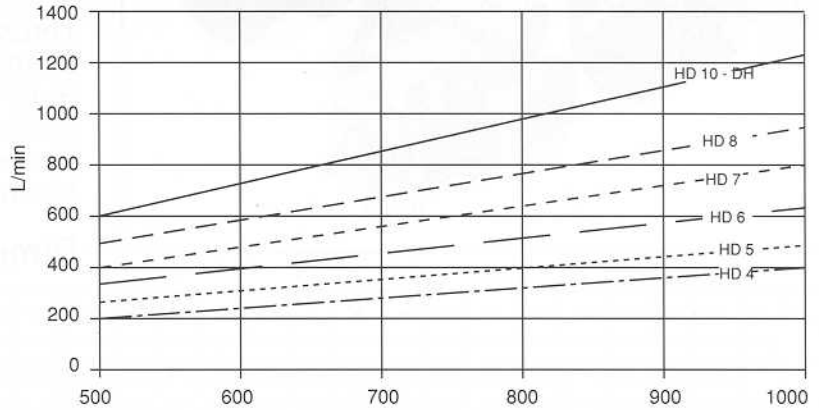
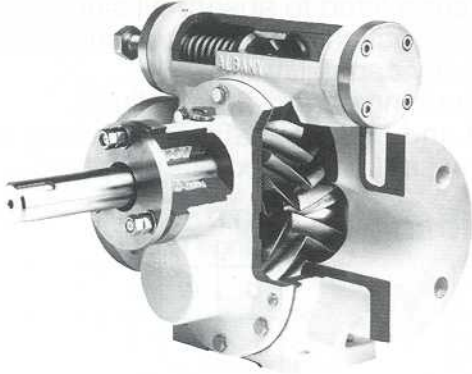


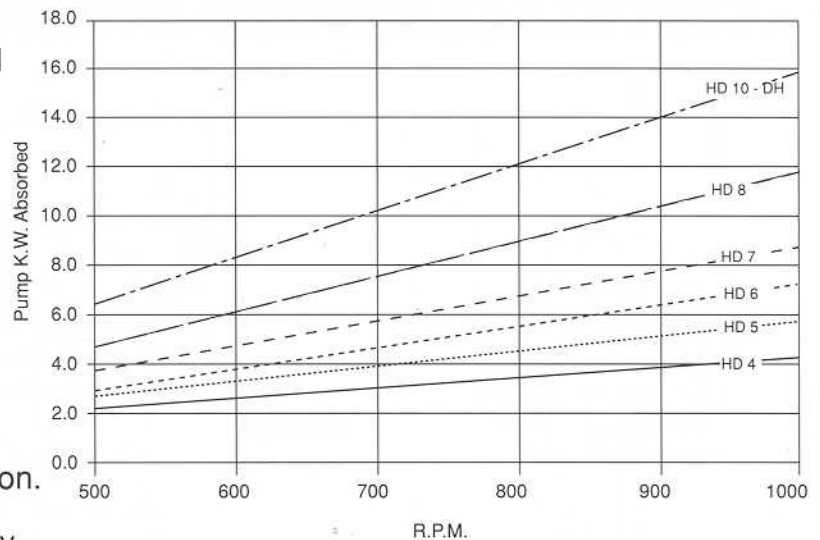


Road Tanker Pumps For Fuels & Oils



R.P.M.

Graphs show pumps running at 0 Bar G on a liquid of visc 50 c st.



R.P.M.

- Pulse free flow from double helical pumping gears.
- Robust pumps, long life, simple maintenance.
- Mechanical seal choices for solvents and other liquids.
- Simple seal replacement.
- Reversible.
- Suitable for mounting in any position.
- Relief valve fitted in the pump body.

PUMP SIZE	BRANCH Flanged BST 'D'
HD4	2"
HD5	2½ or 3"
HD6	3"
HD7	3"
HD8	3 or 4"
HD10 D/H	4"

Standard Construction

Cast iron casing
Carbon steel or cast iron rotors
Hardened & ground shafts
PTFE based bearings
Mechanical seal and thrust bearing

Accessories:-

Hydraulic drive
Reverse flow valves
Hardy Spicer drive flanges
Connecting flanges & mounting brackets

ALBANY ENGINEERING LTD.

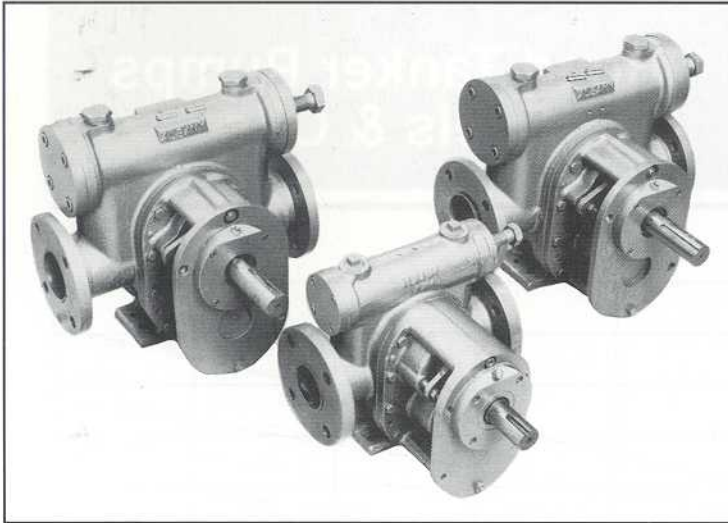
Church Road, Lydney, Glos. GL15 5EQ, UK

Telephone: (01594) 842275-6-7 Fax: (01594) 842574 Telex: 43363

Quality Assurance to BS5750 Pt. 2
and BS EN ISO 9002



Certificate No. FM20986



Versatile General Purpose and Special Purpose Tanker Pumps for a Wide Range of Transported Liquids

Fuel oils, lubricating oils, reclaimed oils, fuels, black oil, mineral spirits, paraffin, solvents, molasses & syrups, inks.

Thrust bearing fitted to absorb all side loads. Simple construction: only two working parts. High viscosity capability. Self lube bearings handle many fluids. Hardened and ground shafts ensure long life. Mechanical seal or packed gland options.

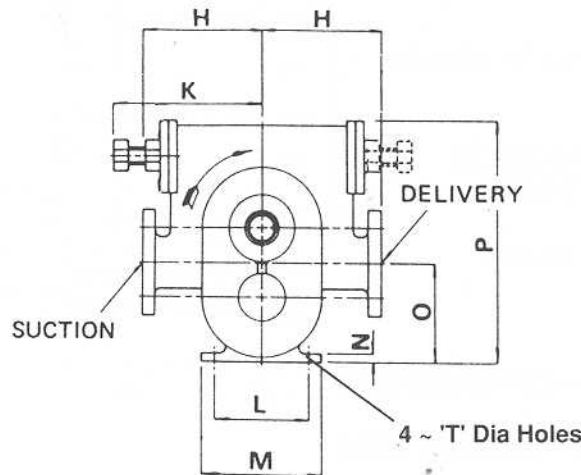
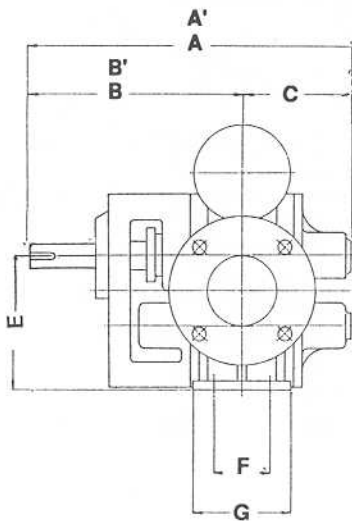
Dimensions (mm)

BST.D Flange Details

PUMP SIZE	A	A'	B	B'	C	E	F	G	H	K	L	M	N	O	P	Q	Q'	R	T
HD5	400	400	273	273	127	159	51	108	171	305	114	146	14	117	314	31.7	31.7	7.9	10
HD6	445	445	292	292	153	159	89	146	165	305	89	146	14	118	305	31.7	31.7	7.9	14
HD7	457	470	292	305	165	197	35	95	197	273	152	190	14	146	381	38	34.9	9.5	10
HD8	508	495	330	317	178	197	83	146	197	330	140	178	14	146	381	38	34.9	9.5	13

U	W	X	WT
2 1/2"	17	127	55kgs
3"	17	146	65kgs
3"	17	146	70kgs
3"	17	146	77kgs

Branches flanged U BST 'D', 4~W Dia holes on X pcd., thickness 19mm
 A', B' & Q' apply to thrust bearing pumps on this page. A, B & Q apply to mechanical seal pumps overleaf.



OTHER TANKER DUTIES

Additional Models: 6" and 8" pumps, delivery up to 1 ton/min. of molasses are available.

Special Construction: corrosion resistant pumps are made in stainless steel, ni resist iron and all bronze materials.

Waste Oil Pumping: Our range of Stanhope 2" and 3" gear pumps handle waste oil at minimum cost

Pump Size	Branch	200 rpm	400 rpm	600 rpm
RS8	2" BSP	226 L/m	452 L/m	678 L/m
RS10	3" flange	273 L/m	546 L/m	819 L/m

Drum Emptying: Albany make 24 volt or 12 volt D.C. motor driven pumps which run off the vehicle battery. Typical flows are 45L/min. with 0.7 kW motor. D.C driven pumps can be provided for Hydraulic services to 40 bars pressure.

Available in cast iron, bronzes, stainless steel. We also provide air motor driven barrel pumps.



CHURCH ROAD, LYDNEY. GLOS. GL15 5EQ
 TEL (01594) 842275-6-7 FAX (01594) 842574 TELEX: 43363