

Albany Pumps

ROTARY GEAR PUMPS FOR HEAVY DUTIES

For over 100 years Albany Pumps have been used for almost every type of liquid with viscosity's ranging from that of aviation spirit to plastics. It is impossible to illustrate and describe every application but this leaflet gives a fair indication of the wide range of types available, and of the duties which they perform.

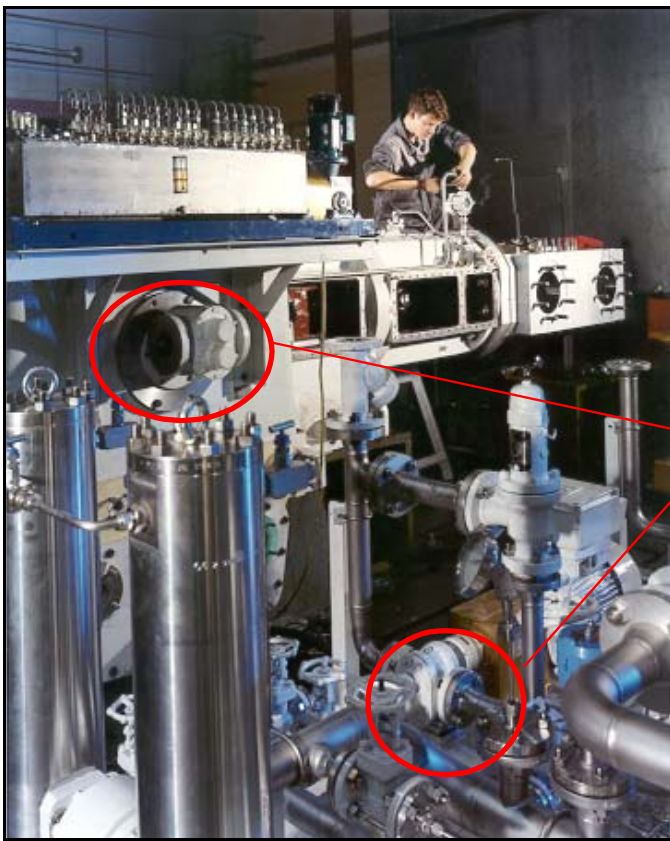
REFINED TAR
GLUCOSE
SIZE . WAX
CHOCOLATE
COCOA BUTTER
WINES & SPIRITS

VISCOSE
GLUE
MOLASSES
ALL OILS
GREASE
FOODSTUFFS

SILICATE OF SODA
PAINTS, RESINS
FATS
ASPHALT
PETROL
ACIDS . ALKALIS

BITUMEN
VARNISH
SOAP
PRINTING INK
PARAFFIN
POLYMERS

Duplex 2" Albany relief valve pumps for diesel transfer on an Indian Oil Platform. This unit meets API 676 and stringent technical and paint specifications.



High pressure reciprocating compressor fitted with a crankshaft driven 3" Albany gear pump. A motor driven Albany API 676 pump gives pre and post lube service.

RANGE OF SIZES AND CAPACITIES

TYPES SMC & HD

Pump Size	Branch Size (ins)	100 rpm	250 rpm	500 rpm	750 rpm
		L/m	L/m	L/m	L/m
1" SMC	1 or 1½		60		180
HD3	1½ or 2	27	68	136	204
HD4	2	40	95	195	285
HD5	2½	50	120	245	360
HD6	3	66	165	327	495
HD7	3	81	203	400	610
HD8	4	100	250	500	750
HD10 DH	4	132	330	618	990
3" SMC	4	182	525	-	Please refer to works for these duties
3" SMC x 9	6" inlet	260	682	-	
HD12 DH	4	227	750	1364	
4" SMC	4	364	950	-	
4" SMC SJ	4	530	1130	-	
HD14 DH	6 or 8	445	1250	2273	
5" SMC	6 or 8	545	1400	-	
6" SMC	8 or 10	875	2270	-	

Stohtert & Pitt Internal Rotary Lobe pumps maximum capacity 3500 l/min.

Method of drive

Pumps can be supplied coupled to electric motors, geared motors, engines or to variable speed drives.

Corrosion resistance

Pumps are offered in stainless steels, cast or fabricated steel, cast iron or specialised alloys.

Relief valves

Incorporated relief valve pumps are available in all sizes where there is any risk of running against a closed valve or where excess pressure is undesirable.

Gland sealing

Pumps can be fitted with mechanical seals or packed glands with any special features necessitated by the fluid to be pumped.

Timing Gears

With slow speed pumps handling viscous fluids, stainless steel pumps, pumps for foodstuffs or abrasive materials timing gears are fitted to prevent metallic contact between the pumping rotors.

Quality Assurance to
BS EN ISO 9001:2000



Certificate No. **FM 20986**

TYPE AP (HIGH SPEED)

Pump Size	Branch Size (ins)	1000	1500 rpm
		L/m	L/m
AP4	½	19	28
AP5	¾	31	45
AP6	¾ or 1	43	65
AP7	1	68	100
AP8	1¼ or 1½	108	160
AP9	1½	140	230
AP9W	2½	205	300
AP11DH	2	270	410
AP11.5DH	2½	350	525
AP12DH	2½ or 3	485	Please refer to Works for these Duties
AP13DH	3 or 4	730	
AP14DH	4	1200	
*AP14SJDH	4	1590	
AP15DH	6 or 8	1815	
HD11Q	6	1940	

* Steam jacketed pump only

Stohtert & Pitt Twin Screw Pumps maximum capacity 300 – 400 m³/hr.

Viscous liquids

Albany pumps can be designed for use with liquids of very high viscosity. Pipe work on the suction side of the pump must be designed to allow the liquid to enter the pump in the simplest possible way and be of ample bore.

Bearings

Remote ball and roller bearings can be supplied where foodstuffs are to be pumped or the nature of the fluid rules out the use of internal bearings. Internal bearings are usually supplied in PTFE based materials or bronze and can be supplied in graphite lubricated forms for high temperature applications.

Oil or Steam Jacketed Pumps

See Leaflet R2 for details

Electrically Heated Pumps

Available for HD3 – 3" SMC sizes (AP10 – AP13.5). See Leaflet B1 for details.

Special Pumps

We are specialists and design and manufacture pumps to individual requirements.

Extended bearing pattern pumps

At higher pressures, or with non lubricating liquids, where the more robust designs are needed yet the application does not justify the expense of roller bearings, extra size plain bearings, are used.

Other Albany Products

include:

Twin Screw Pumps
Rotary Lobe Pumps
Road Tanker pumps
Special Centrifugal Pumps
Hose fittings

See separate Leaflets.

ALBANY ENGINEERING COMPANY LIMITED, Church Road, Lydney, GLOS GL15 5EQ

Tel: +44 (0) 1594 842275
Fax: +44 (0) 1594 842574

e-mail: sales@albany-pumps.co.uk
www: albany-pumps.co.uk