

FF range of Corrosion Resistant Gear Pumps



Features

- Composite construction
- NYRIM housing, reinforced with stainless steel
- Excellent corrosion resistance
- Good abrasion resistance
- Light weight
- Simple design
- Cost effective
- Various options

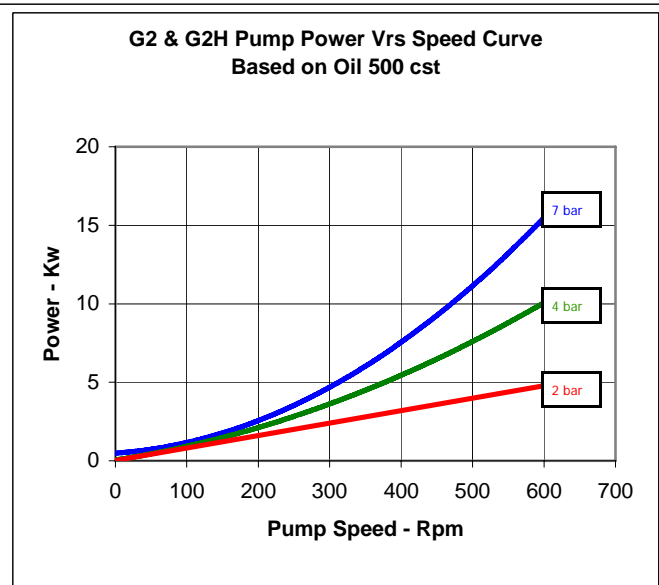
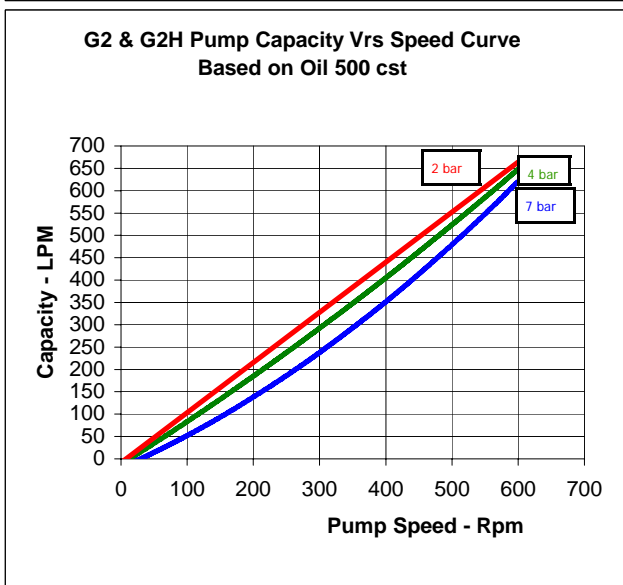
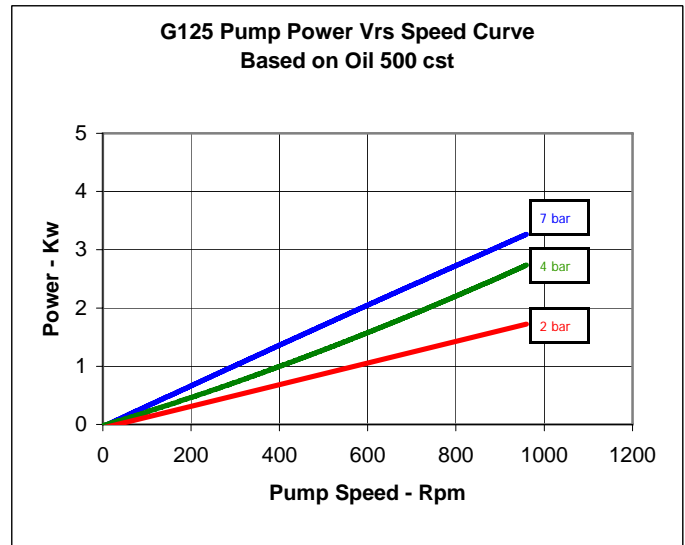
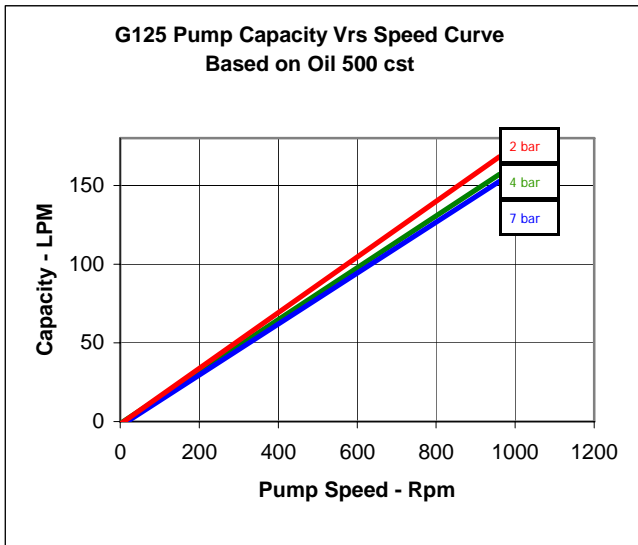
Applications

- **Sugar Industry** – molasses, blackstrap, syrup, glucose
- **Paper Industry** – soap sulphate, fatty esters, tallow, tall oil
- **Agriculture** – farm effluent, liquid animal feeds
- **Mariculture** – fish oils, cod liver oil, halibut liver oil, fish proteins, sperm oil, soft wastes
- **Chemical Industry** – oils, polymers, acid
- **Many others** – flavours, fragrances, chocolate, cocoa butter, edible oils

Albany Standard Pumps

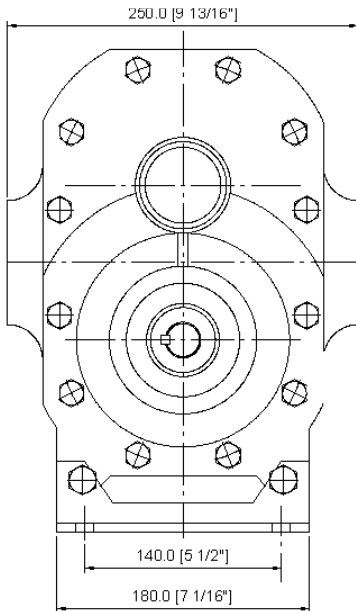
Richter Works, Garnett Street, Bradford, W. Yorks BD3 9HB
Tel: +44 (0) 1274 725 351 Fax: +44 (0) 1274 742 467
e-mail: asp@albany-pumps.co.uk www.albany-pumps.co.uk

Performance

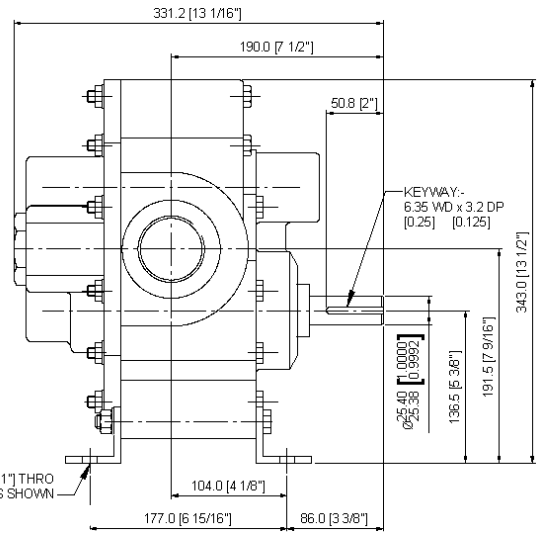
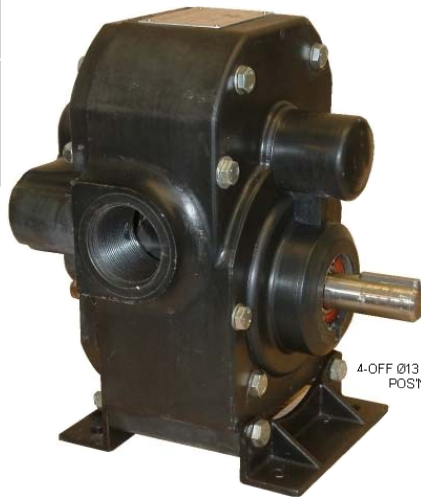


Specifications (standard materials of construction)

Model	G125	G2	G2H
Housing	Nyrim with inserts (316 stainless steel)	Nyrim	Nyrim with inserts (316 stainless steel)
Gears	Polyamide 12	Nyrim	Polyamide 12
Shafts	Stainless steel 316	Stainless steel 316	Stainless steel 316
Bearings	Bronze	Bronze & outboard ball bearing	Bronze
Seals	Lip Seal	Mechanical seal in Viton	Mechanical seal in Viton
Ports	1¼" BSPF	2" BSPF 2½" special order	2" BSPF – UK 2" NPT USA
Top Speed	0 – 950	0 – 300	0 – 650
Temp. range	-40 – +100°C	-40 – +100°C	-40 – +100°C

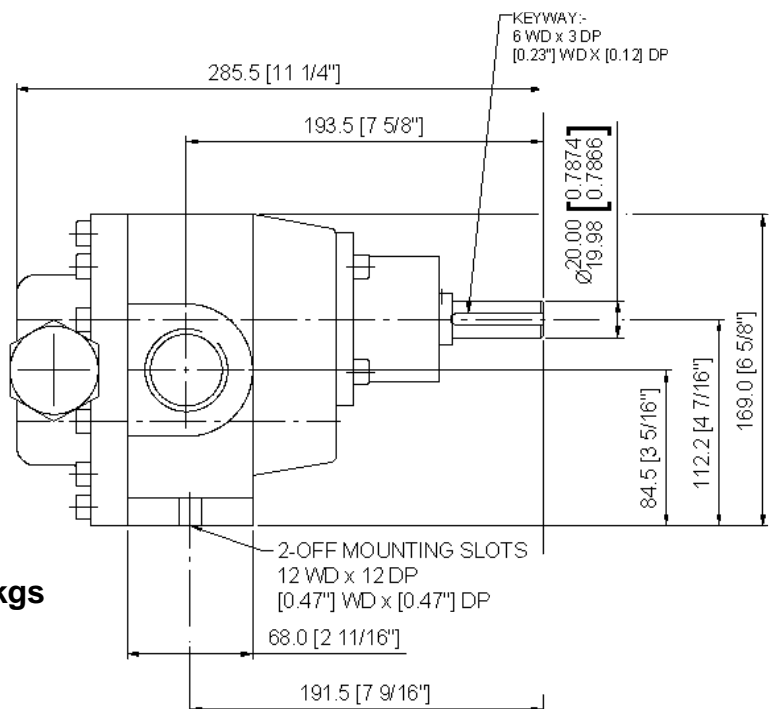
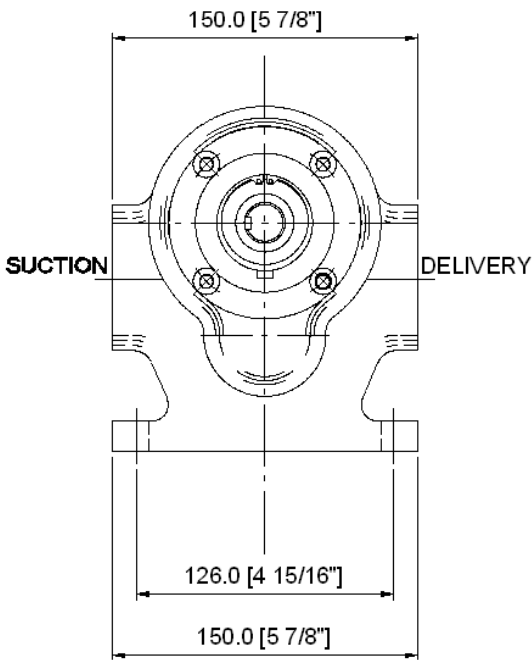


Model G2H



Shipping Weight 45 lbs – 21 kgs

Model G125



Shipping Weight 12lbs – 5.5kgs

Model DR3



We support Model DR3 with spares and we offer a repair service for installed pumps. Regretfully we cannot supply new pumps.

Design Options

Model G2H Carbon bearings
 Various mechanical seal choices
 Bronze, PTFE & Ertalyte gears

Model G125 Ertalyte bearings
 Various mechanical seal materials
 Choice of lip seal shaft sealing materials

OTHER CORROSION RESISTANT PUMPS FROM ALBANY

STANWIN – STAINLESS STEEL

Foot mounted and close coupled pumps for 5 to 25 litres/minute flows.
Please see our leaflet SS1 for details.

AP MODELS



A full range of stainless steel (316) bodied pumps for larger flows. Please see our leaflets R1 & R4 for capacity and power details.

Albany Standard Pumps

Richter Works, Garnett Street, Bradford, W. Yorks BD3 9HB
Tel: +44 (0) 1274 725 351 Fax: +44 (0) 1274 742 467
e-mail: asp@albany-pumps.co.uk www.albany-pumps.co.uk