

# Albany Pumps

## Vertical Centrifugal Sump Pumps

Vertical applications for wet or dry sumps up to 7.5m (24') deep.

### BEARINGS AND SHAFTS

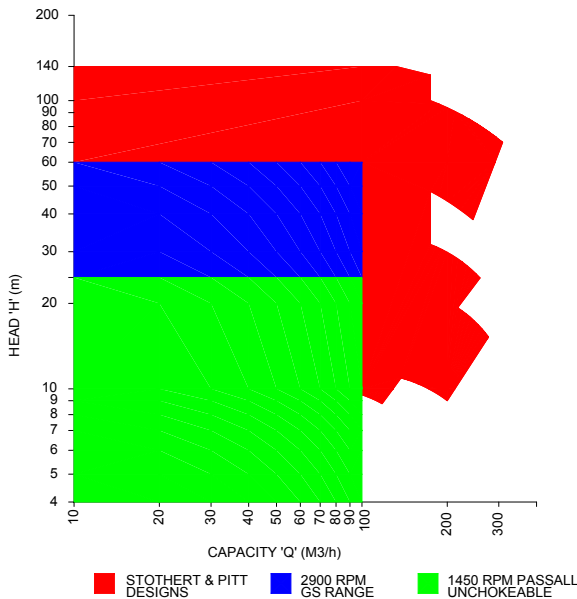
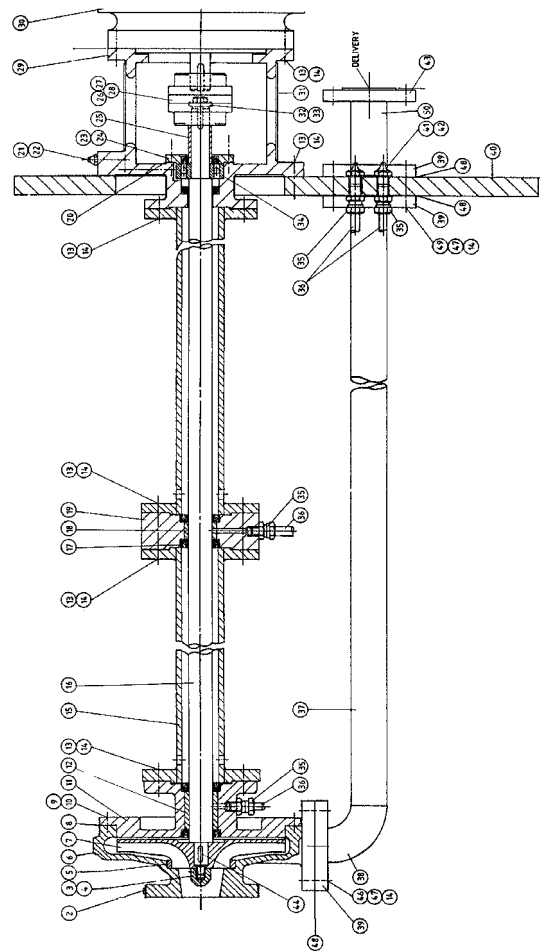
Where sump depths are over 1.5m (5') intermediate bearings are fitted. All bearings can be sealed against the ingress of the fluid being pumped and lubricated from the mounting plate. With clean fluids bearings can be product flushed from the delivery pipe.

Bearings are selected for compatibility with the liquid being pumped and can be suitable for temperatures up to 350°C.

Where the sump depth calls for intermediate shafts these are joined by sturdy muff couplings. Mounting tubes are joined by spigotted flanges to ensure accurate alignment.

When the bottom shaft is made from an expensive alloy, replaceable sleeves are fitted in the bearing area. Bottom shafts can be supplied in hardened materials or with hardfacing treatments.

The motor skirt contains a thrust bearing with grease lubrication. In hot or corrosive applications this bearing is raised above the mounting plate to prevent overheating or damage from corrosive fumes.



Quality Assurance to  
BS EN ISO 9001:2000



ALBANY ENGINEERING COMPANY LIMITED, Church Road, Lydney, GLOS GL15 5EQ

Tel: +44 (0) 1594 842275  
Fax: +44 (0) 1594 842574

e-mail: sales@albany-pumps.co.uk  
www: albany-pumps.co.uk

## **MATERIALS OF CONSTRUCTION**

Pumps are available in Iron, Steel, Stainless Steel and Bronze. Other materials can be provided as dictated by the application. Steel & stainless steel pumps meet API 610.

## **IMPELLERS**

Either unchokeable or shrouded impellers are used. When unchokeable impellers are fitted the pump has an adjustable wear plate. Solids that can enter pumps with these impellers will pass through. All impellers are statically balanced before assembly.

## **DRIVE AND MOUNTING ARRANGEMENTS**

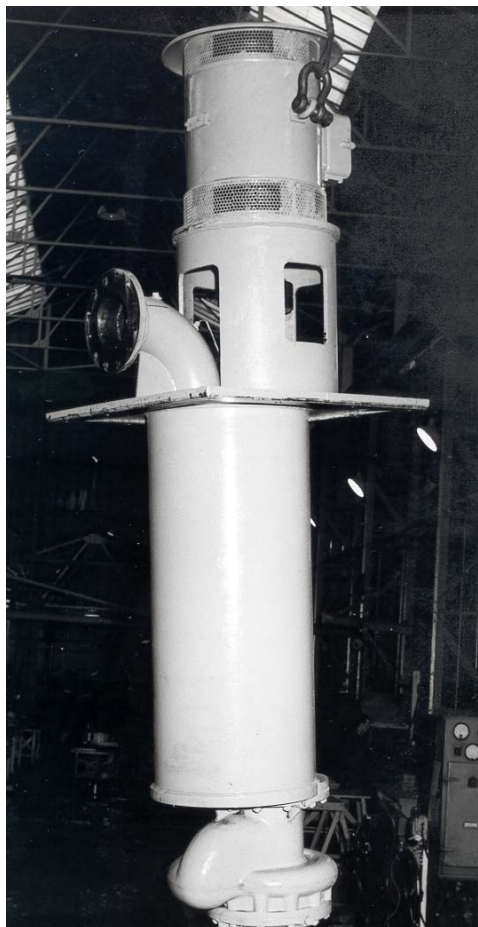
Motor mounting skirts are robustly constructed from steel fabrications or iron castings. A flexible coupling transmits the drive to the pump shaft.

Mounting plates and delivery branches are provided to customers' requirements.

Mechanical seals are available when required and when the application allows their use.

## **DRY SUMP PUMPS**

Where pumps are to be fitted in a dry sump, the pump is fitted with a packed gland or seal.



## **TANK TOP MOUNTED PUMPS FIT SMALL OPENINGS**

The photograph shows one of our small diameter pumps which go into a 508 mm (20") dia. tank opening. These compact pumps are available over the whole range.

## **OTHER ALBANY PRODUCTS INCLUDE A WIDE RANGE OF:**

- Rotary Gear Pumps
- Screw pumps

see separate leaflets.