



# ALBANY B.K. RANGE OF GEAR PUMPS

**Gear Pumps for Bitumen, Tar,  
Pitch & Asphalt -  
100 to 12,000 gph sizes 1" to 5"  
8 l/m to 900 l/m**

6 sizes fitted with relief valve.

Vertically mounted pumps:

Pumps are supplied to pattern "v" for vertical pipelines. (fig 2)

Vertically immersed pumps are supplied for bitumen storage tanks for depths of up to 3m (10ft).



Fig 1. 3" Rotary gear pump with sensitive relief

## Heated Pumps

8 sizes of jacketed pumps for:  
Heating by Steam  
Hot Oil  
or Electric Heating Elements

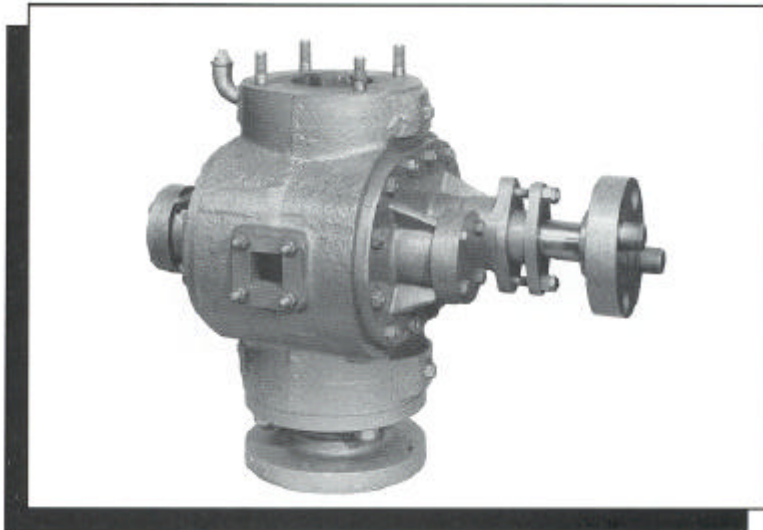


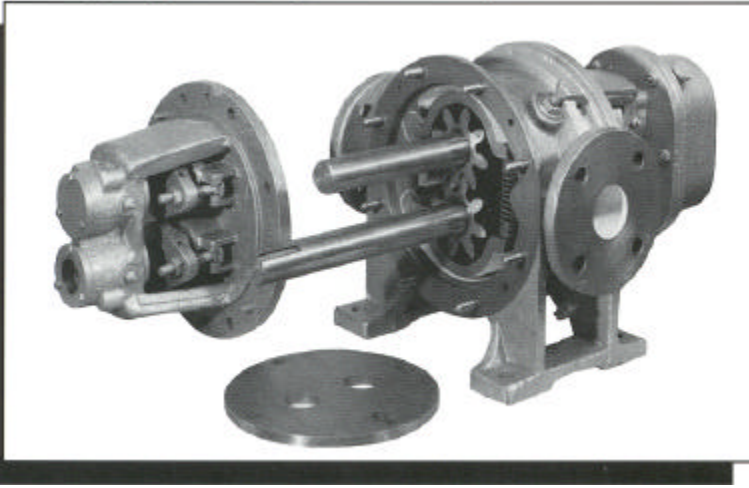
Fig 2. A 4" jacketed bitumen pump for vertical mounting

## PERFORMANCE TABLE AT 300 RPM

Capacity G.P.H.	L/M	Branch Size	Pump Size	kW	Design Options		
					Plain	Jacketed	Integral Relief Valve
600	45	1¼"	1¾/8T	1.1	Y	-	-
960	72	1¼"	2½/8T	1.1	Y	-	Y
1000	75	1¼"	3M/8T RV	1.5	-	-	Y
1100	83	1¼"	3½/8T	2.2	Y	Y	-
1400	105	2"	4¼/8T	2.2	Y	Y	-
2350	177	2"	22/8T	3.0	Y	Y	-
3200	241	2½"	224	4.0	-	-	Y
4000	302	2½"	22X/8T	5.5	Y	Y	-
4800	362	3" or 4"	2" SMC	5.5	Y	Y	Y
4800	362	3"	33/8T	5.5	Y	Y	Y
7200	544	4"	33X/8T	7.5	Y	Y	-
8200	619	4"	44/8T	11.0	Y	Y	-
12000	907	5"	44X/8T	15.0	Y	Y	-
13800	1040	5"	55/8T	15.0	Y	-	Y

Capacities and powers are given for a viscosity of approximately 700 cst, specific gravity 1.0 and a pressure of 3.5 bars.

## Gear Pumps for Hot Abrasive Liquids



The 'TRITON' range of slow running pumps designed to give long service on abrasive asphalt's and viscous slurries.

This range is also available with jacketed covers for oil, steam or electric heating

### PERFORMANCE TABLE FOR TRITON RANGE AT 40-50 PSI

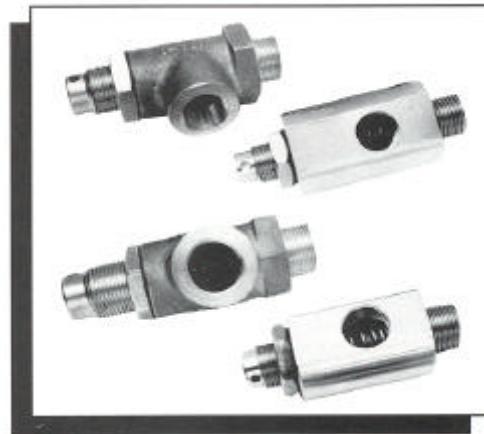
Capacity G.P.H.	L/M	Pump Size	Branch Size	Pump RPM	Motor kW*
900	68	111	2"	350	2.2
2400	181	222	2½"	350	4.0
3240	245	333	3"	300	5.5
4500	340	333A	3"	350	5.5
5000	378	333A	3"	400	7.5

\* kW based on Trinidad Lake Asphalt S.G. 1.35 Viscosity 3400 Redwood No: 1 at 350°F

**Hand Operated Pumps** Gear Pumps for Viscous oils.  
Hand Operated double acting fuel oil pumps for special applications.

## Angle Pattern Relief Valves

Type Crown ¼" - 1" in Gunmetal with Stainless Steel trim as illustrated with BSP female branches.  
¼" - ½" and ¾" available in Stainless Steel  
Type B.K. 2" - 3" - 4" in cast iron, Steel or Gunmetal with flanged branches.  
Jacketed models are available in Steel



**Pump repair & test service:** We have a wide experience in repairing our own pumps.

**We offer:-**

- \* Full examination and estimates before commencing work.
- \* Water and oil test facilities up to 20 HP.
- \* Test Certificate with every repair.
- \* Collection and delivery service and fast turn round.

## ALBANY STANDARD PUMPS

(a division of The Albany Engineering Co. Limited)

Richter Works,  
Garnett Street,  
Bradford,  
Yorkshire  
BD3 9HB

Tel No: +44 (0) 1274 725 351  
Fax No: +44 (0) 1274 742 467

e-mail: [sales@albany-pumps.co.uk](mailto:sales@albany-pumps.co.uk)  
[www: albany-pumps.co.uk](http://www.albany-pumps.co.uk)

BK01