

Pump Options

FOAM PUMPING EXPERTISE FROM ALBANY PUMPS

WATER POWERED FOAM PUMP RANGE

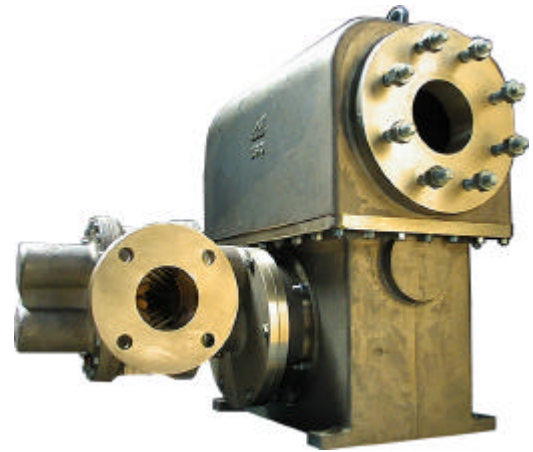
Used offshore and on big storage and loading areas in the oil & gas industry Albany's newly developed 3" foam concentrate pump is a real winner.

The water powered pump offers economy and greatly reduced space requirements. This is critical for offshore fire protection.

The unit supplies 600l/m at up to 18 bars pressure with complete spark-proof safety.

The smallest water powered pumps are portable and used offshore. Medium sized units of 100 – 200 l/m protect helidecks on platforms and ships and Naval vessels.

Albany's foam pump range extends to 1400l/m with our gear pumps and above 3000 l/m with our ranges of twin screw pumps.



ALBANY "FIGHT" TO SECURE ORDER FOR SINGAPORE CIVIL DEFENCE

After fierce competition Albany secured an order from a major Singapore fire fighting & protection equipment specialist. The requirement was for pumps to handle 1400 litres/minute of fire fighting foam concentrate.

Eight model HD8 relief valve extended bearing pattern Albany pumps with 4-inch flanged connections and bare drive shafts were

supplied for building into skids out in Singapore.(photographs show the units under construction).

The roll-on/roll-off skids incorporated the Albany pump coupled to a diesel engine, foam tank, pipe work and control gear. This enables the Singapore Civil Defence to place the unit at any strategic point to facilitate the fighting of fires.



VEHICLE FOAM LOADING AND TRANSFER PUMPS

Right: the Unipower Rapid Intervention Vehicle (RIV) is a new generation first response airfield crash, fire and rescue vehicle. It has exceptional performance and can operate in extremes of climate. Unipower of Coventry (formerly Alvis Motors) chose a DC motor-driven Albany FL5 to pump foam concentrate into the water stream.

Albany make a range of DC or AC driven and air or hydraulic powered foam transfer pumps for use on all types of fire vehicles.



ALBANY THINK – 'FIRE PROTECTION'



Millions of people pass through airports and never give a thought to the fire fighting equipment. The good news is that Albany have given a lot of thought to the design, manufacture and performance of their pumps used on foam concentrate used in fighting aviation fuel fires.

When the fuel storage facilities at a major European airport needed extending Angus Fire were contacted to supply the foam unit skid. This unit was designed to cover the requisite demand of foam for the base injection system on the new storage tanks. An integral and vital part of the unit was a water powered foam pump. Angus, working closely with Albany at the calculation and design stage, incorporated one of Albany's pump units knowing that it would meet the performance requirements specified.

Every foam pump Albany manufacture and supply is thoroughly tested. The water turbine units are fine tuned at the test stage to ensure the foam flow rate at the required discharge pressure is achieved at the stated water pressure. So everyone can rest assured that an Albany pump will perform if and when called upon.

This close up picture shows the Albany foam pump in action. Please note the water falling from the Pelton Wheel.

The Angus Fire skid sits on a concrete foundation with a tundish moulded into concrete to ferry the water away to a drain point.

In many applications the water is piped back to the main water pump suction or to the water storage tank.



ROTARY GEAR, TWIN-SCREW &
CENTRIFUGAL PUMPS

The Albany Engineering Co. Ltd
Church Road, Lydney,
Gloucestershire GL15 5EQ. UK
Tel: +44 (0) 1594 842275
Fax: +44 (0) 1594 842574
e-mail: sales@albany-pumps.co.uk



Quality Assurance to
BS EN ISO 9001:2000

Certificate No. **FM 20986**