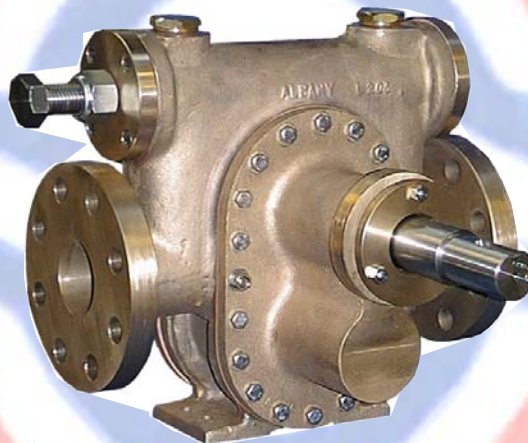


Albany Pumps

Foam Pumps for the Fire Industry



- Foam concentrate injection pumps
- Water driven foam pumps
- Foam transfer pumps
- Pumps for portable water sets

where reliability is crucial

Quality Assurance to
BS EN ISO 9001:2008



Certificate No. **FM 20986**

ALBANY ENGINEERING COMPANY LIMITED, CHURCH ROAD, LYDNEY, GLOS GL15 5EQ U.K.

Tel: +44 (0) 1594 842275
Fax: +44 (0) 1594 842574

e-mail: sales@albany-pumps.co.uk
www.albany-pumps.co.uk

GEAR PUMPS FOR

Albany specialises in the ancillary pumping needs of the Fire industry. A wide range of types and sizes of gear and centrifugal pumps are available, with many drive and mounting options. Albany's engineering expertise includes a high level of customisation, ensuring that pumps can be supplied to meet users needs exactly.

FOAM PUMPS FOR FIRE TRUCKS & FIXED INSTALLATIONS FOR PRESSURES UP TO 21 BARS

16 bars - 225 PSI				20 bars - 300 PSI				PUMP SIZE	BRANCH SIZE	RPM	MAXIMUM RPM
Flow l/m	USGPM	kW	HP	Flow l/m	USGPM	kW	HP				
62	16.5	3.0	4.0	59	15.6	3.6	4.8	AP7N	1" BSP F	1420	3000
86	23.0	5.0	6.6	81	21.6	5.8	7.8	AP7 *	1" BSP F	1420	3000
154	40.8	7.1	9.6	151	40.0	8.9	12.0	AP8	1¼" BSP F	1420	3000
190	50.0	11.2	15.0	185	49.0	12.5	16.8	AP9 *	1½" BSP F	1420	3000
255	67.2	13.4	18.0	240	63.3	16.1	21	AP10 DH	2" Flanged	1420	2200
460	122	20	27	440	116	30	40	HD4	2" Flanged	1420	2200
510	134	26.0	35.0	500	132	34	46	HD5	2½" flanged	1420	2200
640	169	26.0	35.0	600	158	34	46	HD7	3" flanged	1420	1800
820	217	44.0	59	770	203	75	100	HD8 DH	4" Flanged	960	1800
940	248	53.7	72	890	235	67.0	90	HD10	4" Flanged	960	1800
1200	317	68	91	1080	285	85.0	114	HD11Q x 6½"	6" Inlet 4" Outlet	960	1400
1400	370	80	107	1250	330	100	134	HD11Q x 8"	6" Inlet 4" Outlet	960	1400
2000	529	100	134	1666	440	130	174	SH2 170	8" Flanged	1450	1800
3000	790	150	201	2500	660	200	268	SH2 196	8" Flanged	1450	1730

The two models shown in red above are from our range of twin screw pumps

* AP7, AP9 & HD5 models are approved by VdS for use in stationary water extinguishing systems.



Above flows based on foams of 12-14 cst & S.G: 1.2
Viscosity range 3 cps to 2000 cps can be accommodated.

Other versions are available for maximum 40 bar pressure, depending on viscosity. Larger flows are available to 9000 l/min.

CONSTRUCTION:

- PUMP CASING:** Gunmetal or stainless steel 316. Flanges to ASA or DIN standards, Screwed branches: NPT available to choice.
- ROTORS:** Phosphor bronze or stainless steel A304
- SHAFTS:** Stainless steel 316 with options of hard coatings and pressure balance.
- BEARINGS:** Self-lubricated based on PTFE or Carbon.
- RELIEF VALVE:** Usually mounted in the pump body for internal circulation. Valve with external relief can be supplied.
- GLAND & SEALS:** John Crane mechanical seals (or PTFE lip seals) may be offered as an alternative to packed glands.
An internal pressure relief system reduces pressure in the gland and seal area.
- REVERSIBLE:** Albany gear pumps can run in either direction (water driven Pelton wheel pump sets are built for one direction of rotation only).

NFPA 20: Albany pumps comply with the latest edition (1999)

DRIVES

When pumps are fitted to fire tender vehicles, drive is normally from PTO but may be via hydraulic motor or a separate engine. Fixed installations normally employ electric motors or diesel engine drives. However, there is an increasing preference for water turbine drives for foam concentrate pumps.

THIXOTROPIC FOAM CONCENTRATES

Albany pumps will handle thixotropic foam liquids. Pumps may be run at normal speeds, as the shear rate within the pump is sufficient to reduce viscosities. Suction lines should be as short as possible and of generous diameter since these liquids have a high resistance to flow.

THE FIRE INDUSTRY

WATER POWERED FOAM LIQUID PUMPS – where safety is paramount

FOR USE: Offshore, Jetties

Fixed installations in tank farms and refineries

Foam Concentrate pressures from 8 to 19 bars

Using water supply pressures 7 to 18 bars

Pump Size	Foam Output at 2000 rpm and 10 bars	
	L/M	kW
WT375	4.5	0.48
WT500	6.0	0.6
AP5N	18.0	1.2
AP5N	37.0	1.8
AP5	60.0	2.4

1 PORTABLE PUMPS

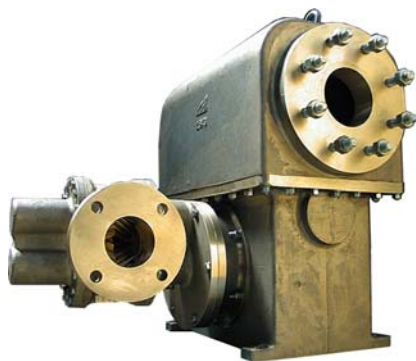
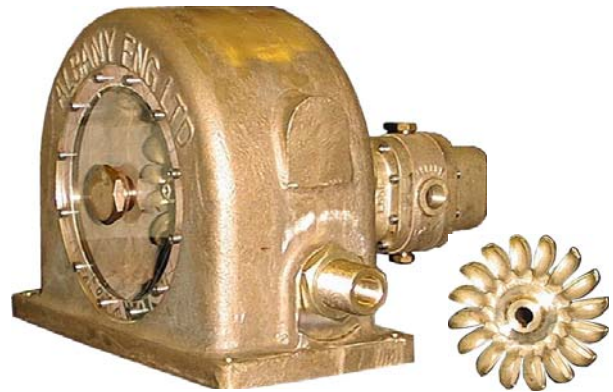
Lightweight, high speed Pelton Wheel drives at 2000 – 3000 rpm. The maximum water requirement is 11m³/hr

2 CLOSE COUPLED FOAM LIQUID PUMPS

Flows 67 – 216 l/min (4 to 13 m³/hr)

Albany pump sizes AP7N to AP9 with ¾" to 1½" connections. Compact pumpsets are supplied in bronze. The maximum water requirement is 45m³/hr.

VdS approved models.



3 CLOSE COUPLED FOAM LIQUID PUMPS

Flows 250 – 600 l/m (15 – 36 m³/hr)

Albany pump sizes AP9, AP11.5 & HD8.

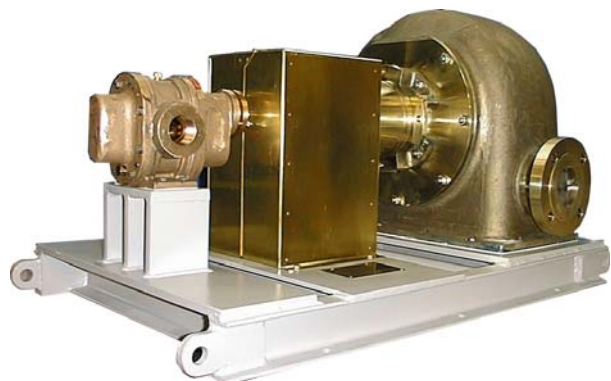
Albany's 3" Model HD5 foam concentrate pump uses a newly developed Pelton Wheel turbine. The water inlet is flanged 4" ASA, maximum water requirement is 115 m³/hr.

4 BEDPLATE-MOUNTED UNITS

Foam liquid flows 650 – 1400 l/min (40 to 84 m³/hr)

We use Albany's 3" or 4" flanged foam concentrate pumps: AP12 to HD8.

The pumps are coupled to large Pelton wheel turbines developing up to 30 kW.



Note: Water supply pressure must be measured at the inlet to the turbine

TRANSFER PUMPS – DRUMS/BULK CONTAINERS



24V DC pump for 40 l/m flow



Petrol or diesel driven pumps for up to 300l/m flow.

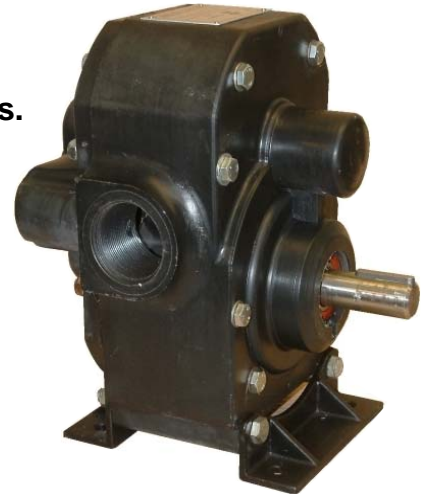
FOAM CONCENTRATE ROAD TANKERS

Low cost , low weight corrosion-proof Nylon cased pumps.

Maximum pressure: 7 bars

Maximum temperature: 70°C

Pump Model	Output litres/min at top speed
G125 (1 1/4" BSP)	160 L/M at 1000 rpm
G2 (2" BSP)	600 L/M at 600 RPM



DRUM EMPTYING

Our 20 bar pressure pump will empty drums and IBC's when running about 500 rpm.

• APPROVALS – QA

Albany holds BS EN ISO 9001:2000 approval. World-wide, many installations of its pumps fulfil rigorous test and service conditions. We meet the QA and documentation requirements of the oil and gas industry.

VdS approval is held for the AP7 & AP9 families of pumps used on fixed installations.

• TESTING

Albany tests all its pumps and has facilities to test water turbine driven pump sets.

• API SPECIFICATION PUMPS

Albany gear pumps are supplied to meet API 676.

• FINISHES

Albany has shot-blasting and painting facilities in-house. The Company is fully capable of meeting offshore paint specifications.

• DOCUMENTATION

Albany publishes a comprehensive instruction and maintenance manual. Customised instructions are provided for customers when required.

• SPARES

Spares are held for all standard pumps. Please fax for details and prices, quoting the serial number stamped on the pump body.

Quality Assurance to
BS EN ISO 9001:2008



Certificate No. FM 20986

ALBANY ENGINEERING COMPANY LIMITED, CHURCH ROAD, LYDNEY, GLOS GL15 5EQ U.K.

Tel: +44 (0) 1594 842275
Fax: +44 (0) 1594 842574

e-mail: sales@albany-pumps.co.uk
www.albany-pumps.co.uk