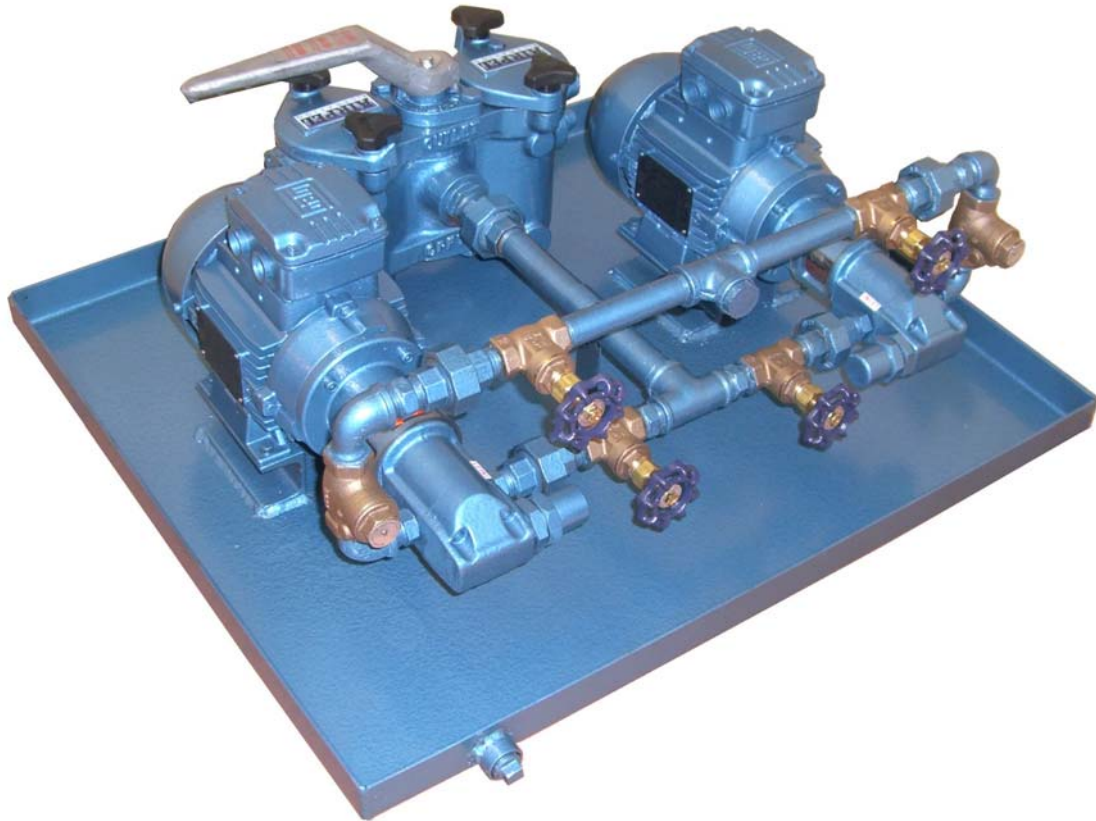


# Albany Pumps

## Duplex Fuel Oil

### Pumping & filtering sets



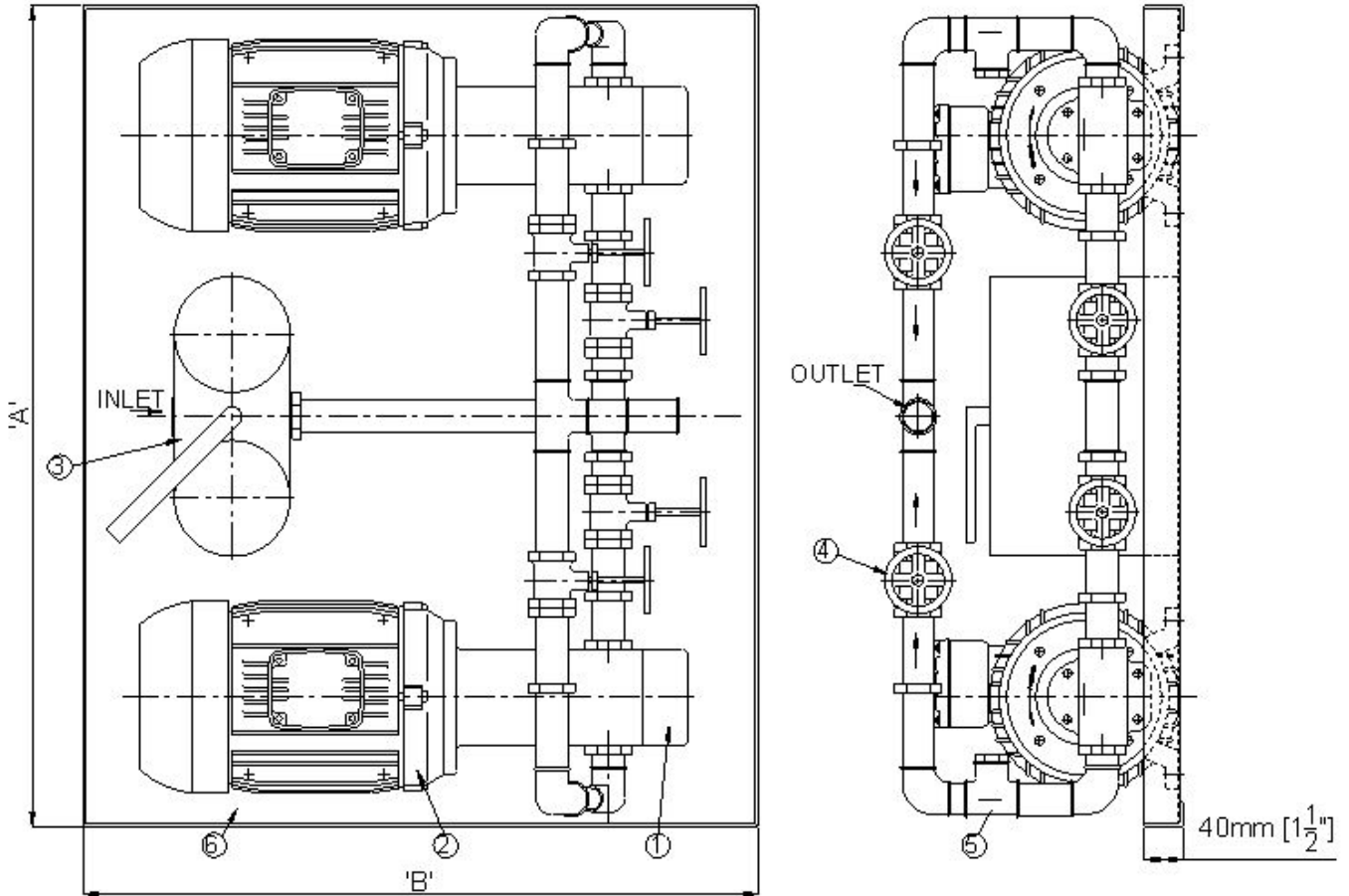
- Robust motorised pumps
- TEFC electric motors for 3ph or 1 phase supply. 50Hz and 60Hz
- Exd Atex pump sets for hazardous areas
- Auto changeover control panels
- Duplex filters available

### Capacity

MODEL	L/min	Power – kW at 3.5 bars pressure
25-375	4.8	.12
25-750	10	.25
25-1500	20	.55
25-2000	27	.55
40-1300	43	1.1
40-1750	57	1.1
40-2750	90	1.5

Figures are given for 4 cst fuel oil and pump speed 1420 RPM. Larger close-coupled pumps from our 56 series models offer flows from 150 to 300 l/min.

# Dimensions



MODEL	DIMENSIONS mm		PIPE CONNECTIONS	
	A	B	INLET	OUTLET
25-0375	700	650	3/4"	1/4"
25-0750	700	650	3/4"	1/2"
25-1500	700	650	3/4"	1/2"
25-2000	700	650	3/4"	1/2"
40-1300	850	700	1"	1"
40-1750	850	700	1"	1"
40-2750	850	700	1"	1.1/4"

ITEM	PART
1	PUMP
2	MOTOR
3	FILTER
4	GATE VALVE
5	NON-RETURN VALVE
6	TRAY

# Operating Instructions

Operating instructions are available on request.

**ALBANY STANDARD PUMPS (DIVISION OF THE ALBANY ENGINEERING CO. LTD)**  
**RICHTER WORKS, GARNETT STREET, BRADFORD BD10 ORJ**

Tel: +44 (0) 1274 725 361  
 Fax: +44 (0) 1274 742 467

e-mail: [asp@albanyumps.co.uk](mailto:asp@albanyumps.co.uk)  
 www: [albany-pumps.co.uk](http://albany-pumps.co.uk)