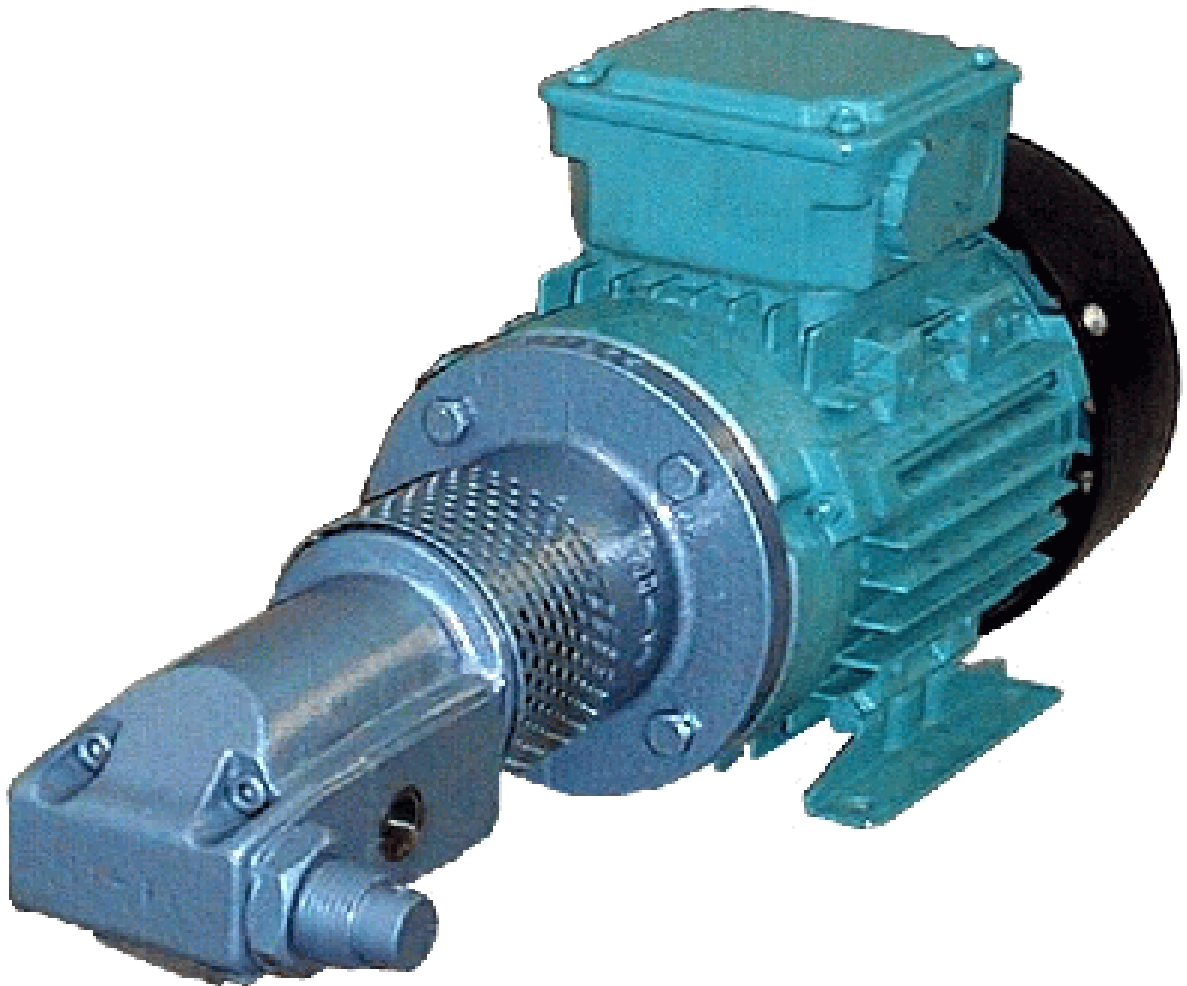


Albany 25 Series Pumps



Albany Standard Pumps

(a Division of The Albany Engineering Company Limited)

Richter Works
Garnett Street
Bradford
BD3 9HB

Tel No: +44 (0) 1274 725 351
Fax No: +44 (0) 1274 742 467
e-mail: asp@albany-pumps.co.uk
[Http://www.albany-pumps.co.uk](http://www.albany-pumps.co.uk)

Head Office:
Albany Engineering Co. Limited
Church Road,
Lydney,
GLOS. GL15 5EQ

Tel No: +44 (0) 1594 842275
Fax No: +44 (0) 1594 842574

25 Series Models

Compact and robust gear pumps with cast iron casings, steel rotors and shafts and adjustable glands. Adjustable internal relief valves are available on all pumps

FEATURES

- Self-priming
- Constant, non-pulsating flow
- Rotational speeds between 100 rev/min and 3600 rev/min
- Packed adjustable gland, lip seal or mechanical seal
- Choice of bearings
- Motor drive or bare drive shaft
- Electric or air motor drive for normal, extreme or hazardous conditions
- Individually tested

PRESSURE, FLOW & SUCTION

25 Series gear pumps can produce pressures up to 10 bar depending on available power supply (kW) and liquid. Powers listed in performance tables cover relief valve pattern pumps with discharge pressures up to that stated.

The rate of flow is proportional to the running speed.

Suction lift will vary according to the shaft speed, viscosity and the vapour pressure.

TEMPERATURE

Running at recommended speeds standard pumps can handle liquids at temperatures from 0°C – 85°C.

Special pumps are available for liquids at extreme temperatures.

ROTORS

25 Series pumps are fitted with spur gear rotors.

MOUNTING – for options and type references see dimension drawings.

ROTATION

Standard rotation is clockwise, looking from the drive shaft end of the pump. This direction of rotation will be supplied unless otherwise requested.

APPLICATIONS

Machine tools, sprayers, packaging machinery, bottle washing, de-icing, damp proofing, timber treatment, oil and solvent re-cycling, fuel oil systems, pressure testing, processing, de-greasing, general circulation, lubrication and transfer duties.

LIQUIDS HANDLED

Fuel oils, coolants, lubricants, solvents, bitumen, liquid wax, molasses, cooking oil, glue, varnish, detergents, anti-freeze, insecticides, sodium hydroxide, paints etc.

VISCOSITY

25 Series gear pumps are individually tested on oil. The performance details shown are based on these tests at the viscosities stated. Viscosity will rise as temperature falls. Viscous liquids will cavitate at high running speeds. Cavitation can be prevented by heating liquids to reduce viscosity, or pumping at low speeds or both.

RELIEF VALVES

Relief valves are pre-set to protect the motor from overload. They are not suitable for use as control valves. The relief valve can be supplied for external relief if needed.

SEALING

Lip seals are standard on all type F models. Packed glands are standard on all type P models with mechanical seal as an option.

Nitrile mechanical seals are standard on type O models. Viton mechanical seals are an option.

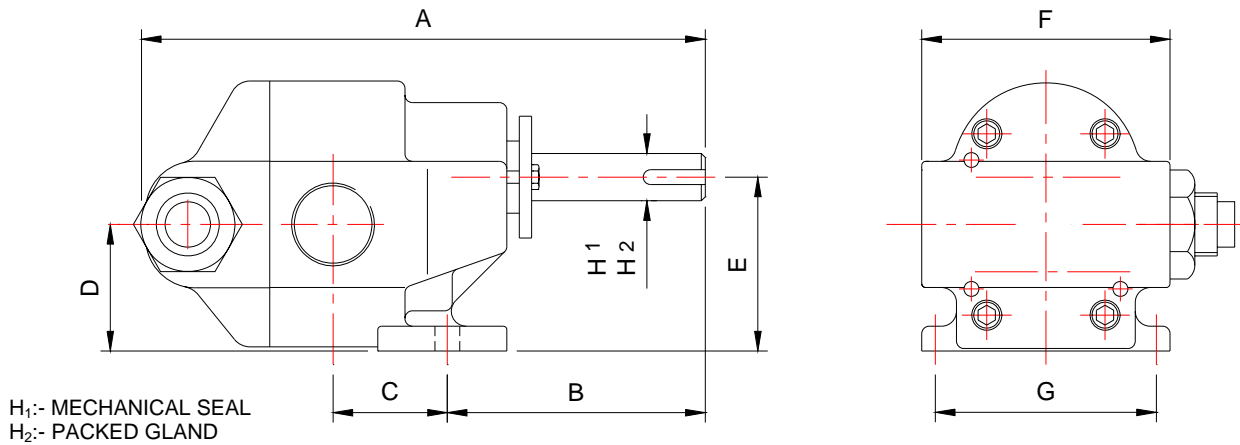
SUCTION CONDITIONS

Pumps are suitable for suction lifts up to 3m. However, it is advisable for lifts over 2m, long suction runs & suction losses over 0.4 bar to contact Albany sales for advice.

NOTE: Suction head and static discharge head on lip seal models must not exceed 0.34 bar g

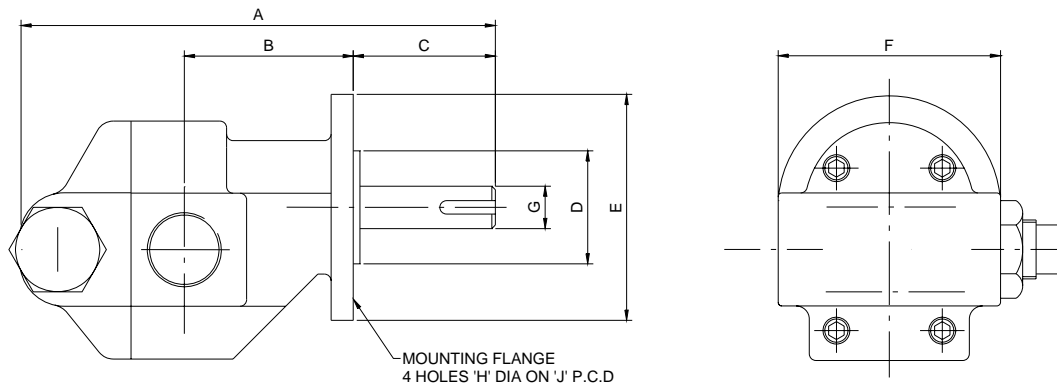
Dimensions

MODEL TYPE 'P' 25 pedestal mounting, available with: PACKED GLAND or MECHANICAL SEAL



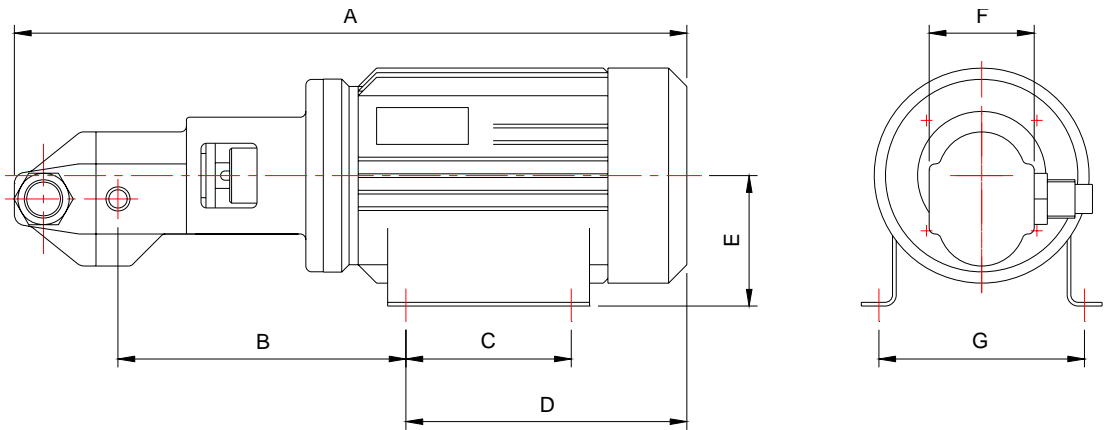
| Model 'P' | mm | | | | | | | | | Branch BSP female | WEIGHT kg |
|-----------|-----|----|----|----|----|----|----|----------------|----------------|-------------------|-----------|
| | A | B | C | D | E | F | G | H ₁ | H ₂ | | |
| 25-0375 | 134 | 69 | 14 | 38 | 51 | 60 | 67 | 10 | 13 | 1/4" | 2.2 |
| 25-0750 | 142 | 68 | 18 | 38 | 51 | 60 | 67 | 10 | 13 | 1/2" | 2.5 |
| 25-1500 | 161 | 68 | 19 | 38 | 51 | 60 | 67 | 10 | 13 | 1/2" | 3.0 |
| 25-2000 | 176 | 68 | 19 | 38 | 51 | 60 | 67 | 10 | 13 | 1/2" | 3.4 |

MODEL TYPE 'F' 25 flange mounting with: LIP SEAL



| MODEL 'F' | mm | | | | | | | MOUNTING FLANGE | | BRANCH BSP female | WEIGHT kg |
|-----------|-----|----|----|----|-----|----|----|-----------------|------|-------------------|-----------|
| | A | B | C | D | E | F | G | H | J | | |
| 25-0375 | 116 | 30 | 32 | 51 | 102 | 60 | 14 | 9 | 82.5 | 1/4" | 2.2 |
| 25-0750 | 126 | 30 | 36 | 51 | 102 | 60 | 14 | 9 | 82.5 | 1/2" | 2.5 |
| 25-1500 | 145 | 30 | 36 | 51 | 102 | 60 | 14 | 9 | 82.5 | 1/2" | 3.0 |
| 25-2000 | 157 | 30 | 36 | 51 | 102 | 60 | 14 | 9 | 82.5 | 1/2" | 3.4 |

MODEL TYPE 'O' 25 motorised available with: MECHANICAL SEAL



Note: D90 motors will have an adaptor flange.

| MODEL 'O' | MOTOR | | mm | | | | | | | BRANCH BSP female | WEIGHT kg | | |
|-----------|-------|------|-----|-----|-----|-----|-----|----|----|-------------------|-----------|------|------|
| | | | A | B | C | | D | E | F | | | | G |
| 25-375 | D71C | | 398 | 166 | 90 | | 176 | 71 | 60 | 112 | 1/4" | 9.5 | |
| 25-750 | D71C | | 407 | 172 | 90 | | 176 | 71 | 60 | 112 | 1/2" | 10 | |
| 25-1500 | D71C | | 427 | 172 | 90 | | 176 | 71 | 60 | 112 | 1/2" | 10.5 | |
| 25-2000 | D71C | | 439 | 172 | 90 | | 176 | 71 | 60 | 112 | 1/2" | 11.0 | |
| 25-375 | D80C | | 432 | 171 | 100 | | 205 | 80 | 60 | 125 | 1/4" | 12.0 | |
| 25-750 | D80C | | 441 | 177 | 100 | | 205 | 80 | 60 | 125 | 1/2" | 12.5 | |
| 25-1500 | D80C | | 461 | 177 | 100 | | 205 | 80 | 60 | 125 | 1/2" | 13 | |
| 25-2000 | D80C | | 473 | 177 | 100 | | 205 | 80 | 60 | 125 | 1/2" | 13.5 | |
| 25-1500 | D90S | D90L | 420 | 183 | 100 | 125 | 214 | 90 | 60 | 140 | 1/2" | 16.5 | 18.5 |
| 25-2000 | D90S | D90L | 432 | 183 | 100 | 125 | 214 | 90 | 60 | 140 | 1/2" | 17.0 | 19.0 |

Performance

| 960 rev/min | | | | | | | | | 1420 rev/min | | | | | | | | |
|-------------|------------------|---------------------------|------|------|------|-------------|------|------|--------------|------------------|---------------------------|------|------|------|-------------|------|------|
| Model | Viscosity in cst | Capacity in litres/min at | | | | kW at these | | | Model | Viscosity in cst | Capacity in litres/min at | | | | kW at these | | |
| | | 0 | 3.5 | 7 | 10 | 3.5 | 7 | 10 | | | 0 | 3.5 | 7 | 10 | 3.5 | 7 | 10 |
| 25-375 | 35 | 3.5 | 3.2 | 2.9 | 2.6 | 0.12 | 0.12 | 0.18 | 25-375 | 4 | 5.1 | 4.8 | 4.5 | - | 0.12 | 0.18 | - |
| | 125 | 3.5 | 3.3 | 3.1 | 2.9 | 0.12 | 0.12 | 0.18 | | 125 | 5.1 | 4.9 | 4.7 | 4.5 | 0.18 | 0.18 | 0.25 |
| | 1250 | 3.5 | 3.4 | 3.3 | 3.2 | 0.25 | 0.25 | 0.37 | | 750 | 5.0 | 4.9 | 4.8 | 4.7 | 0.37 | 0.37 | 0.37 |
| 25-750 | 35 | 7.1 | 6.5 | 5.9 | 5.3 | 0.18 | 0.25 | 0.37 | 25-750 | 4 | 10.2 | 10.0 | 9.8 | - | 0.25 | 0.55 | - |
| | 125 | 7.1 | 6.9 | 6.7 | 6.5 | 0.18 | 0.37 | 0.55 | | 125 | 10.2 | 10.1 | 10.0 | 9.9 | 0.37 | 0.55 | 0.75 |
| | 1250 | 7.1 | 6.8 | 6.7 | 6.6 | 0.37 | 0.55 | 0.55 | | 750 | 10.0 | 10.0 | 9.9 | 9.8 | 0.55 | 0.75 | 0.75 |
| 25-1500 | 35 | 14.1 | 13.0 | 12.4 | 11.8 | 0.25 | 0.37 | 0.55 | 25-1500 | 4 | 20.8 | 20.4 | - | - | 0.55 | - | - |
| | 125 | 14.1 | 13.9 | 13.7 | 13.5 | 0.37 | 0.55 | 0.75 | | 125 | 20.8 | 20.5 | 20.2 | 19.9 | 0.55 | 1.1 | 1.5 |
| | 1250 | 14.1 | 13.6 | 13.5 | 13.4 | 0.75 | 1.1 | 1.1 | | 750 | 19.8 | 19.8 | 19.7 | 19.6 | 1.1 | 1.5 | 1.5 |
| 25-2000 | 35 | 18.8 | 18.1 | 17.4 | 16.7 | 0.25 | 0.55 | 0.75 | 25-2000 | 4 | 27.7 | 27.3 | - | - | 0.55 | - | - |
| | 125 | 18.8 | 18.6 | 18.4 | 18.2 | 0.37 | 0.75 | 1.1 | | 125 | 27.7 | 27.5 | 27.3 | 27.1 | 0.55 | 1.1 | 1.5 |
| | 1250 | 18.8 | 18.6 | 18.4 | 18.2 | 0.75 | 1.1 | 1.1 | | 750 | 25.8 | 25.8 | 25.7 | 25.6 | 1.1 | 1.5 | 1.5 |

Pumps for liquids with viscosities less than 4 centistokes and over 750 centistokes must be referred to Albany sales for selection.