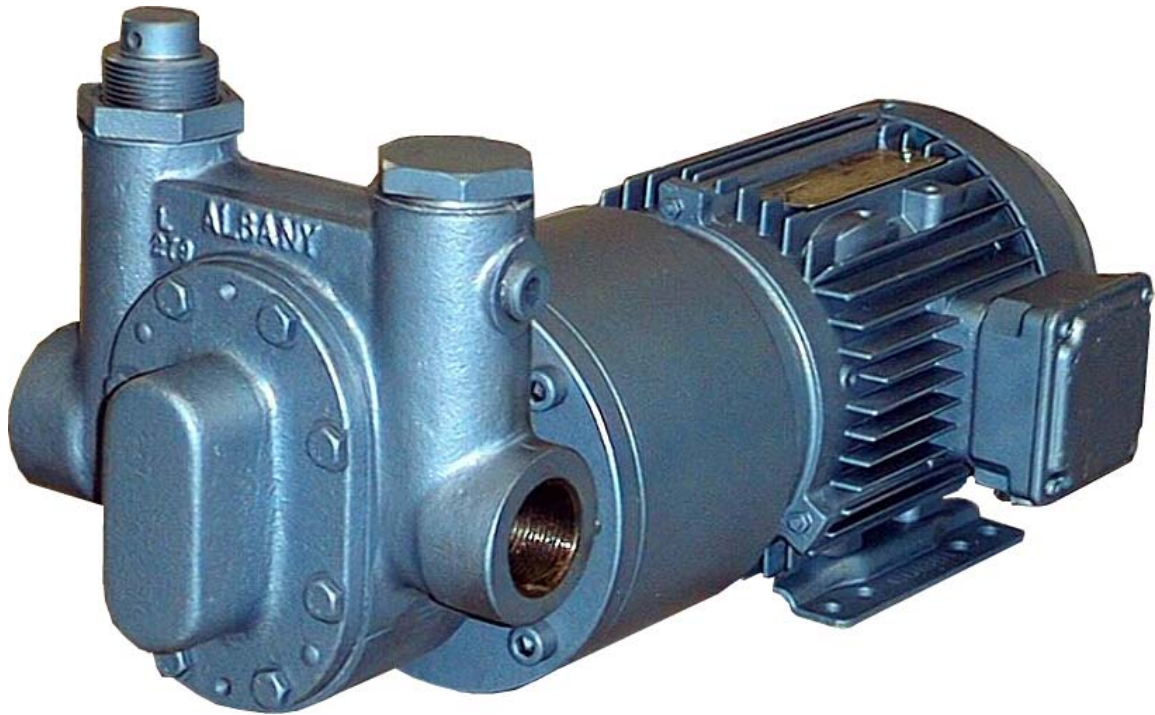


Albany Stanhope 56 Series Pumps



Albany Standard Pumps

(a Division of The Albany Engineering Company Limited)

Richter Works
Garnett Street
Bradford
BD3 9HB

Tel No: +44 (0) 1274 725 351
Fax No: +44 (0) 1274 742 467
e-mail: sales@albany-pumps.co.uk
[Http://www.albany-pumps.co.uk](http://www.albany-pumps.co.uk)

Head Office:
Albany Engineering Co. Limited
Church Road
Lydney
GLOS. G115 5EQ

Tel No: +44 (0) 1594 842275
Fax No: +44 (0) 1594 842574

56 Series Models

Compact and robust gear pumps with cast iron casings, steel rotors and shafts and adjustable glands. Adjustable internal relief valves are available on all pumps

FEATURES

- * Self-priming
- * Constant, non-pulsating flow
- * Operates between 100 rev/min to 1725 rev/min
- * Packed adjustable gland, lip seal or mechanical seal
- * Choice of bearings
- * Motor drive or bare drive shaft
- * Electric or air motor drive for normal, extreme or hazardous conditions
- * Individually tested

PRESSURE, FLOW & SUCTION

56 series gear pumps can produce pressures up to 10 bar depending on available power supply (kW) and liquid. Powers listed in performance tables cover relief valve pattern pumps with discharge pressures up to that stated.

The rate of flow is proportional to the running speed. Suction lift will vary according to the shaft speed, viscosity and the vapour pressure.

TEMPERATURE

Running at recommended speeds standard pumps can handle liquids at temperatures from 0EC - 95EC. Special pumps are available for liquids at extreme temperatures.

ROTORS

All 56 series pumps can have spur or double helical rotors (flowrate from a double helical rotor pump will be slightly lower than that from a spur rotor pump).

MOUNTING - for options and type references see dimension drawing.

SPECIAL PUMPS

Some options:-

Many varieties of 56 series pumps can be supplied from existing Albany designs including pumps for extreme temperatures and pressures.

Heated Pumps
Vertical Models

Pumps in Gunmetal, Steel & Stainless Steel
Very compact 'VP' Models

APPLICATIONS

Machine tools, sprayers, packaging machinery, bottle washing, de-icing, damp proofing, timber treatment, oil and solvent re-cycling, fuel oil systems, pressure testing, processing, de-greasing, general circulation, lubrication and transfer duties.

LIQUIDS HANDLED

Fuel oils, coolants, lubricants, solvents, bitumen, liquid wax, molasses, cooking oil, glue, varnish, detergents, anti-freeze, insecticides, sodium hydroxide, paints etc.

VISCOSITY

56 Series gear pumps are individually tested on oil. The performance details shown are based on these tests at the viscosities stated. Viscosity will rise as temperature falls. Viscous liquids will cavitate at high running speeds. Cavitation can be prevented by heating liquids to reduce viscosity, or pumping at low speeds, or both.

RELIEF VALVES

Relief valves are pre-set to protect the motor from overload. They are not suitable for use as control valves. The relief valve can be supplied for external relief if needed.

SEALING

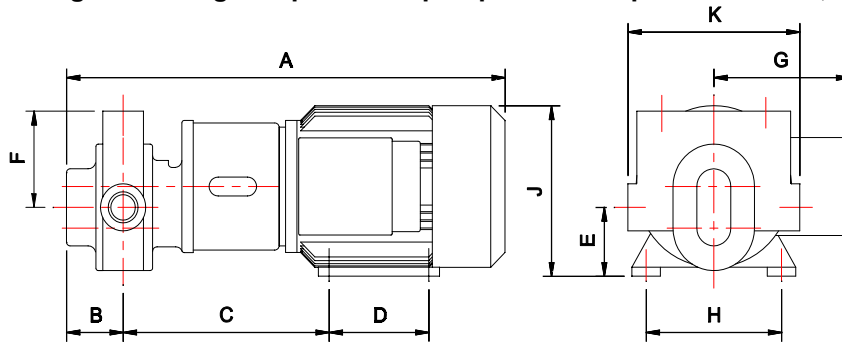
Lip seals are standard on all type F models. Packed glands are standard on all type P models.

Mechanical seals are available on type P models

Note: Suction head & static discharge head on lip seal models must not exceed 0.34 barg

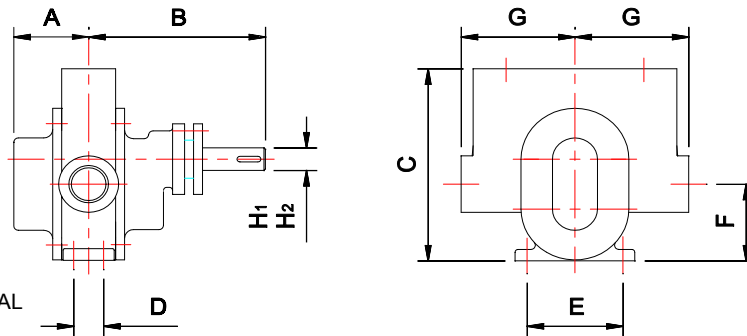
Dimensions

MODEL TYPE 'F' 56 flange mounting complete with pump/motor adaptor and motor, available with: LIP SEAL



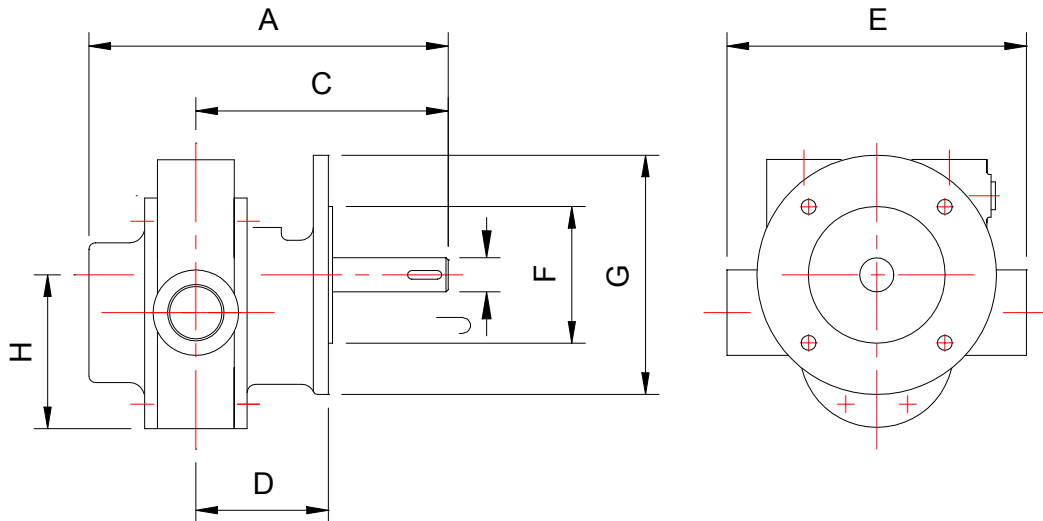
MODEL 'F'	MTR	mm												BRANCH BSP female	WEIGHT Kg		
		A		B		C	D	E	F		G	H	J			K	
		RV	NON RV	RV	NON RV				RV	NON RV						RV	NON RV
56-2250	D90L	557		79		264	125	62	175	85	154	140	178	242	171	1.1/4"	38
56-2250	D100L	609		79		282	140	72	175	85	180	160	204	242	171	1.1/4"	38
56-2250	D112M	610		79		289	140	84	175	85	191	190	223	242	171	1.1/4"	44
56-2250	D132M	795		79		133	114	124	175	85	214	216	285	242	171	1.1/4"	94
56-3250	D90L	583		92		277	125	62	175	85	154	140	178	242	152	1.1/2"	44
56-3250	D100L	835		92		295	140	72	175	85	180	160	204	242	152	1.1/2"	44
56-3250	D112M	636		92		302	140	84	175	85	191	190	223	242	152	1.1/2"	48
56-3250	D132M	821		92		146	114	124	175	85	214	216	285	242	152	1.1/2"	98
56-4500	D112M	843	667	284	108	318	140	84	85	191	190	223	165	165	2.1/2"	61	
56-4500	D132M	1028	852	284	108	162	114	124	85	214	216	285	165	165	2.1/2"	111	
56-4500	D160L	1110	934	284	108	162	114	124	85	273	216	317	165	165	2.1/2"	161	

MODEL TYPE 'P' 56 pedestal mounting, available with: PACKED GLAND or MECHANICAL SEAL

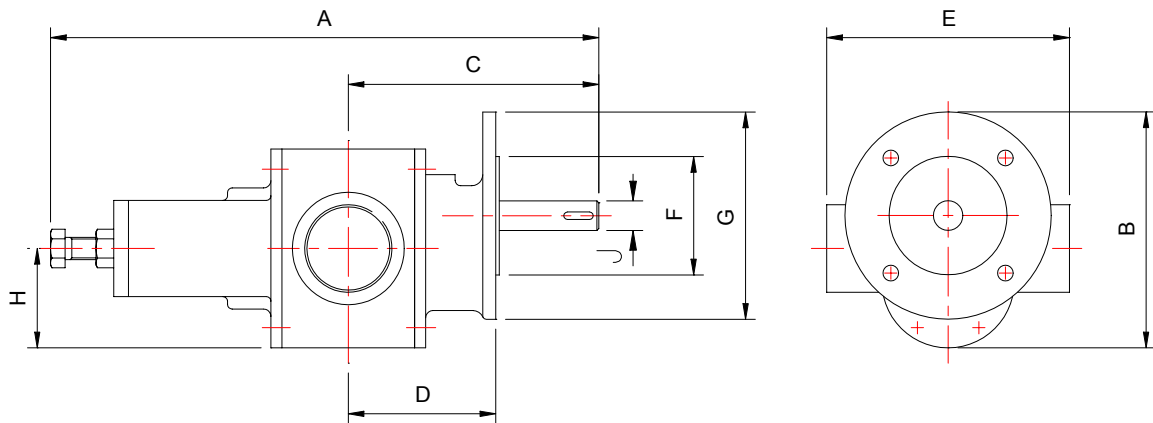


MODEL 'P'	mm										BRANCH BSP female	WEIGHT Kg		
	A		B	C		D	E	F	G				H1	H2
	RV	NON RV		RV	NON RV				RV	NON RV				
56-2250	79		187	260	171	32	102	86	121	85.5	19	25.4	1.1/4"	17
56-3250	92		200	260	171	38	102	86	121	76	19	25.4	1.1/2"	21
56-4500	259	108	216	171		76	124	86	82.5		19	25.4	2.1/2"	34

MODEL TYPE 'F' 56 flange mounting, available with: LIP SEAL

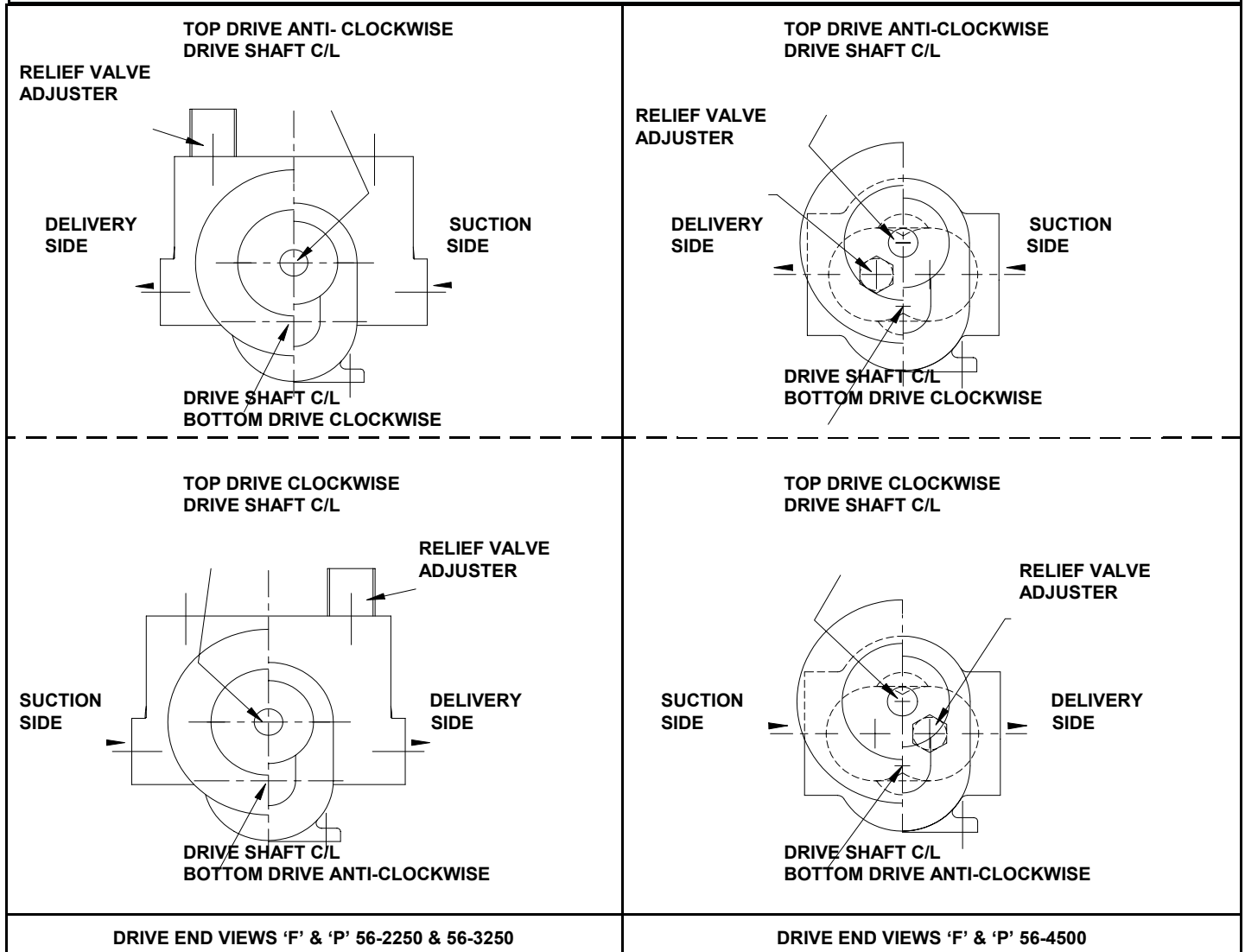


MODEL 'F'	mm											BRANCH BSP female	WEIGHT Kg		
	A		B		C	D	E		F	G	H		J	RV	NON RV
	RV	NON RV	RV	NON RV			RV	NON RV							
56-2250	267		260	203	187	98	222	172	102	178	114	25.4	1¼"	17	13
56-3250	292		260	203	200	111	241	152	102	178	114	25.4	1½"	21	17



MODEL 'F'	mm											BRANCH BSP female	WEIGHT Kg		
	A		B		C	D	E		F	G	H		J	RV	NON RV
	RV	NON RV	RV	NON RV			RV	NON RV							
56-4500	497	324	203		216	127	165		102	178	114	25.4	2½"	24	20

Rotation & Flow



Performance

960 rev/min									1420 rev/min								
Model	Viscosity in cst	Capacity in litres/min at these pressures (bar g)				kW at these pressures (bar g)			Model	Viscosity in cst	Capacity in litres/ min at these pressures (bar g)				kW at these pressures (bar g)		
		0	3.5	7	10	3.5	7	10			0	3.5	7	10	3.5	7	10
56-2250	4	103	98	93	-	1.5	2.2	-	56-2250DH	4	154	147	140	-	3.0	4.0	-
	125	103	99	95	91	1.5	3.0	4.0		125	154	148	142	136	3.0	4.0	5.5
	1250	103	100	97	94	2.2	3.0	4.0		1250	154	150	146	142	4.0	5.5	5.5
56-3250	4	148	141	-	-	2.2	-	-	56-3250DH	4	222	211	200	-	4.0	5.5	-
	125	148	142	136	130	3.0	4.0	5.5		125	222	213	204	195	4.0	5.5	7.5
	1250	206	144	140	136	3.0	4.0	5.5		1250	222	216	210	204	5.5	7.5	11
56-4500	4	206	196	-	-	2.2	-	-	56-4500DH	4	308	294	-	-	4.0	-	-
	125	206	198	190	182	3.0	5.5	7.5		125	308	296	284	272	4.0	7.5	11
	1250	206	200	194	188	5.5	7.5	7.5		1250	308	300	292	284	7.5	11	15

Pumps for liquids with viscosities less than 4 centistokes must be referred to Albany sales for selection.

Suitable for suction lift up to 3M